

SERVICE MANUAL

Level 1&2

NOKIA
6120
CLASSIC

NOKIA
6121
CLASSIC

RM-243

RM-310

RM-308

RM-309



Transceiver characteristics:

Band:

EGSM: Quad-band 850/900/1800/1900MHz

RM-243: WCDMA/HSDPA: 850/2100MHz

RM-310: WCDMA/HSDPA: -----

RM-308: WCDMA/HSDPA: 900/2100MHz

RM-309: WCDMA/HSDPA: 800/2100MHz

Display:

LCD: QVGA (320x240 pixel); 16M colors

Camera:

Camera: 2.0 Megapixel SMIA85

Operating System:

Series 60

Connections:

Wireless: Bluetooth,

Connector: Mini USB Connector; AV Connector

Memory:

MicroSD™ (max 2GB)

Transceiver with BL-5B Li-Ion battery pack

Talk time	Standby	Note
up to 3.1h	up to 9days	Depends on network parameters

TABLE OF CONTENTS

Page

1.	CHANGE HISTORY	3
2.	COPYRIGHT	3
3.	WARNINGS AND CAUTIONS	4
4.	ESD PROTECTION	4
5.	CARE AND MAINTENANCE	5
6.	BATTERY INFORMATION	5
7.	EXPLODED VIEW	6
8.	SPARE PARTS OVERVIEW	7
9.	HANDLING WASTE / RECYCLING IN NOKIA REPAIR SERVICE	8
10.	LEVEL 2 SOLDER COMPONENTS	9
11.	SERVICE DEVICES	10
12.	SW-UPDATE	11
13.	DISASSEMBLY INSTRUCTION	12
14.	ASSEMBLY INSTRUCTION	18
15.	LEGEND FOR QUICK TROUBLE SHOOTER	20
16.	QUICK TROUBLE SHOOTER - POWER ON	21
17.	QUICK TROUBLE SHOOTER - CHARGING	22
18.	QUICK TROUBLE SHOOTER - NO SERVICE	23
19.	QUICK TROUBLE SHOOTER - BLUETOOTH	24
20.	QUICK TROUBLE SHOOTER - EARPIECE	25
21.	QUICK TROUBLE SHOOTER - IHF SPEAKER	26
22.	QUICK TROUBLE SHOOTER - DISPLAY	27
23.	QUICK TROUBLE SHOOTER - KEYPAD	28
24.	QUICK TROUBLE SHOOTER - MICROPHONE	29
25.	QUICK TROUBLE SHOOTER - VOLUME/CAMERA KEYS	30
26.	QUICK TROUBLE SHOOTER - FLASH LIGHT	31

1. CHANGE HISTORY

Status	Version No.	Date	Comments
Draft	0.1	07.May.2007	Initial draft
Approved	1.0	30.May.2007	Approval
Approved	2.0	20.Jun.2007	Exploded View & Spare Parts overview

The purpose of this document is to help NOKIA service levels 1 and 2 workshop technicians to carry out service to NOKIA products. This Service Manual is to be used only by authorized NOKIA service suppliers, and the content of it is confidential. Please note that NOKIA provides also other guidance documents (e.g. Service Bulletins) for service suppliers, follow these regularly and comply with the given instructions.

While every endeavor has been made to ensure the accuracy of this document, some errors may exist. If you find any errors or if you have further suggestions, please notify NOKIA using the address below:

CMO Operation & Logistics
Training and Vendor Development
Multimedia Creation & Support
<mailto:Service.Manual@nokia.com>

Please keep in mind also that this documentation is continuously being updated and modified, so watch always out for the newest version.

2. COPYRIGHT

Copyright © 2007 Nokia. All rights reserved.

Reproduction, transfer, distribution or storage of part or all of the contents in this document in any form without the prior written permission of Nokia is prohibited.

Nokia, Nokia Connecting People, and Nokia X and Y are trademarks or registered trademarks of Nokia Corporation. Other product and company names mentioned herein may be trademarks or tradenames of their respective owners.

Nokia operates a policy of continuous development. Nokia reserves the right to make changes and improvements to any of the products described in this document without prior notice.

Under no circumstances shall Nokia be responsible for any loss of data or income or any special, incidental, consequential or indirect damages howsoever caused.

The contents of this document are provided "as is". Except as required by applicable law, no warranties of any kind, either express or implied, including, but not limited to, the implied warranties of merchantability and fitness for a particular purpose, are made in relation to the accuracy, reliability or contents of this document. Nokia reserves the right to revise this document or withdraw it at any time without prior notice. The availability of particular products may vary by region.

IMPORTANT

This document is intended for use by qualified service personnel only.

3. WARNINGS AND CAUTIONS

Warnings and Cautions

Please refer to the phone's user guide for instructions relating to operation, care and maintenance including important safety information. Note also the following:

Warnings:

1. CARE MUST BE TAKEN ON INSTALLATION IN VEHICLES FITTED WITH ELECTRONIC ENGINE MANAGEMENT SYSTEMS AND ANTI-SKID BRAKING SYSTEMS. UNDER CERTAIN FAULT CONDITIONS, EMITTED RF ENERGY CAN AFFECT THEIR OPERATION. IF NECESSARY, CONSULT THE VEHICLE DEALER/MANUFACTURER TO DETERMINE THE IMMUNITY OF VEHICLE ELECTRONIC SYSTEMS TO RF ENERGY.
2. THE HANDPORTABLE TELEPHONE MUST NOT BE OPERATED IN AREAS LIKELY TO CONTAIN POTENTIALLY EXPLOSIVE ATMOSPHERES, EG PETROL STATIONS (SERVICE STATIONS), BLASTING AREAS ETC.
3. OPERATION OF ANY RADIO TRANSMITTING EQUIPMENT, INCLUDING CELLULAR TELEPHONES, MAY INTERFERE WITH THE FUNCTIONALITY OF INADEQUATELY PROTECTED MEDICAL DEVICES. CONSULT A PHYSICIAN OR THE MANUFACTURER OF THE MEDICAL DEVICE IF YOU HAVE ANY QUESTIONS. OTHER ELECTRONIC EQUIPMENT MAY ALSO BE SUBJECT TO INTERFERENCE.

Cautions:

1. Servicing and alignment must be undertaken by qualified personnel only.
2. Ensure all work is carried out at an anti-static workstation and that an anti-static wrist strap is worn.
3. Use only approved components as specified in the parts list.
4. Ensure all components, modules screws and insulators are correctly re-fitted after servicing and alignment.
5. Ensure all cables and wires are repositioned correctly.

4. ESD PROTECTION

Nokia requires that service points have sufficient ESD protection (against static electricity) when servicing the phone.

Any product of which the covers are removed must be handled with ESD protection. The SIM card can be replaced without ESD protection if the product is otherwise ready for use.

To replace the covers ESD protection must be applied.

All electronic parts of the product are susceptible to ESD. Resistors, too, can be damaged by static electricity discharge.

All ESD sensitive parts must be packed in metallized protective bags during shipping and handling outside any ESD Protected Area (EPA).

Every repair action involving opening the product or handling the product components must be done under ESD protection.

ESD protected spare part packages MUST NOT be opened/closed out of an ESD Protected Area.

For more information and local requirements about ESD protection and ESD Protected Area, contact your local Nokia After Market Services representative.



5. CARE AND MAINTENANCE

This product is of superior design and craftsmanship and should be treated with care. The suggestions below will help you to fulfil any warranty obligations and to enjoy this product for many years.

- Keep the phone and all its parts and accessories out of the reach of small children.
- Keep the phone dry. Precipitation, humidity and all types of liquids or moisture can contain minerals that will corrode electronic circuits.
- Do not use or store the phone in dusty, dirty areas. Its moving parts can be damaged.
- Do not store the phone in hot areas. High temperatures can shorten the life of electronic devices, damage batteries, and warp or melt certain plastics.
- Do not store the phone in cold areas. When it warms up (to its normal temperature), moisture can form inside, which may damage electronic circuit boards.
- Do not drop, knock or shake the phone. Rough handling can break internal circuit boards.
- Do not use harsh chemicals, cleaning solvents, or strong detergents to clean the phone.
- Do not paint the phone. Paint can clog the moving parts and prevent proper operation.
- Use only the supplied or an approved replacement antenna. Unauthorised antennas, modifications or attachments could damage the phone and may violate regulations governing radio devices.

All of the above suggestions apply equally to the product, battery, charger or any accessory.

6. BATTERY INFORMATION

Note: A new battery's full performance is achieved only after two or three complete charge and discharge cycles! The battery can be charged and discharged hundreds of times but it will eventually wear out. When the operating time (talk-time and standby time) is noticeably shorter than normal, it is time to buy a new battery. Use only batteries approved by the phone manufacturer and recharge the battery only with the chargers approved by the manufacturer.

Unplug the charger when not in use. Do not leave the battery connected to a charger for longer than a week, since overcharging may shorten its lifetime.

If left unused a fully charged battery will discharge itself over time. Temperature extremes can affect the ability of your battery to charge.

For good operation times with Ni-Cd/NiMh batteries, discharge the battery from time to time by leaving the product switched on until it turns itself off (or by using the battery discharge facility of any approved accessory available for the product).

Do not attempt to discharge the battery by any other means. Use the battery only for its intended purpose. Never use any charger or battery which is damaged.

Do not short-circuit the battery. Accidental short-circuiting can occur when a metallic object (coin, clip or pen) causes direct connection of the + and - terminals of the battery (metal strips on the battery) for example when you carry a spare battery in your pocket or purse. Short-circuiting the terminals may damage the battery or the connecting object.

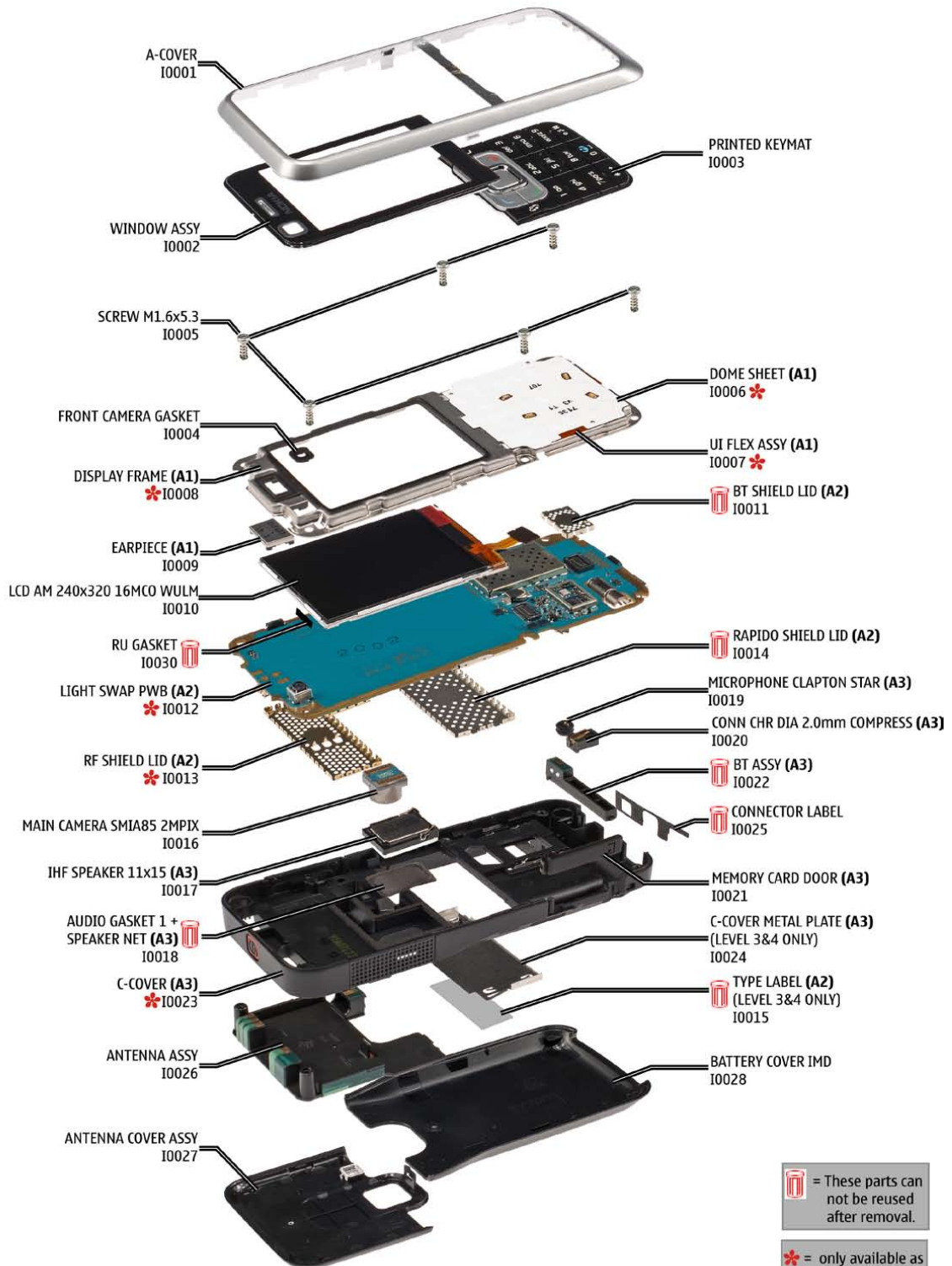
Leaving the battery in hot or cold places, such as in a closed car in summer or winter conditions, will reduce the capacity and lifetime of the battery. Always try to keep the battery between 15°C and 25°C (59°F and 77°F). A phone with a hot or cold battery may temporarily not work, even when the battery is fully charged. Batteries' performance is particularly limited in temperatures well below freezing.

Do not dispose batteries in a fire! Dispose of batteries according to local regulations (e.g. recycling). Do not dispose as household waste.

7. EXPLODED VIEW

See corresponding ITEM/CIRCUIT REF in the Spare Parts Service Bulletins on NOL.

6120c RM-243/RM-310 / 6121c RM-308/RM-309 EXPLODED VIEW

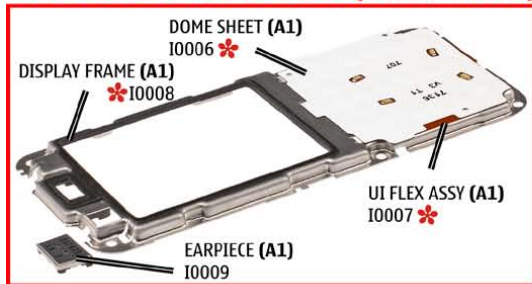


Ver. 2.0

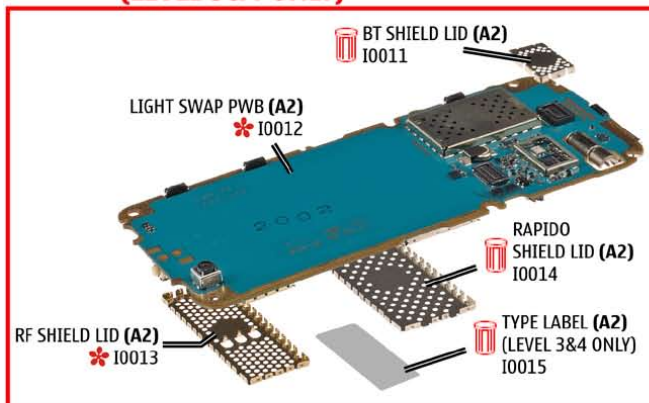
8. SPARE PARTS OVERVIEW

6120c RM-243/RM-310 / 6121c RM-308/RM-309 SPARE PARTS OVERVIEW

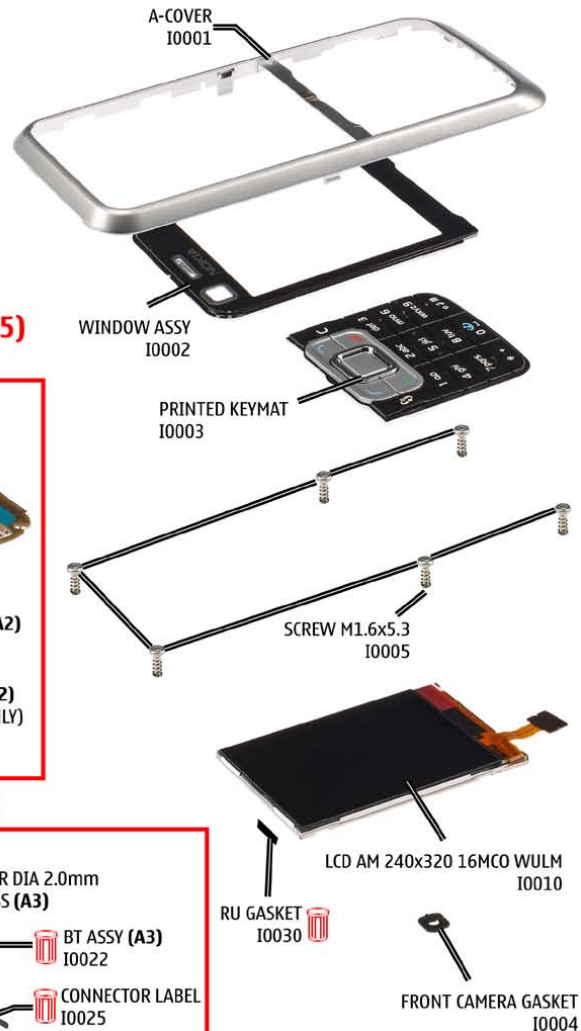
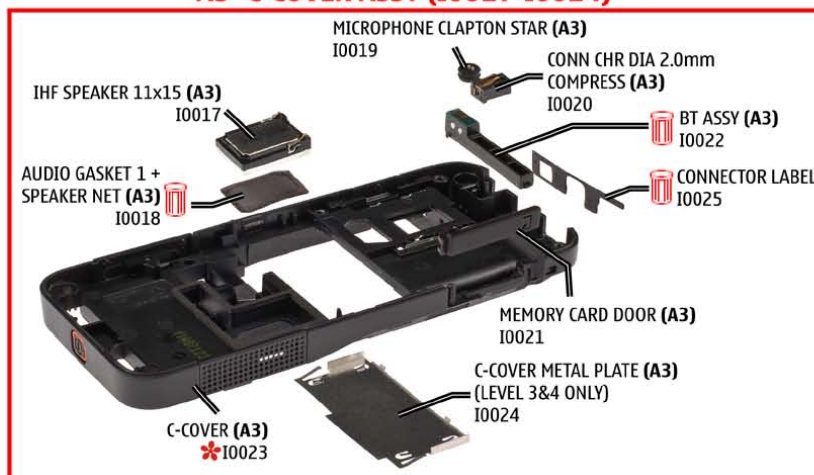
A1=DISPLAY FRAME ASSY (I0006-I0009)





**A2=LIGHT SWAP PACKAGE (I0011-I0015)
(LEVEL 3&4 ONLY)**



A3=C-COVER ASSY (I0017-I0024)



 = These parts can not be reused after removal.

 = only available as assembly

Ver. 2.0

9. HANDLING WASTE / RECYCLING IN NOKIA REPAIR SERVICE

Please refer to the document

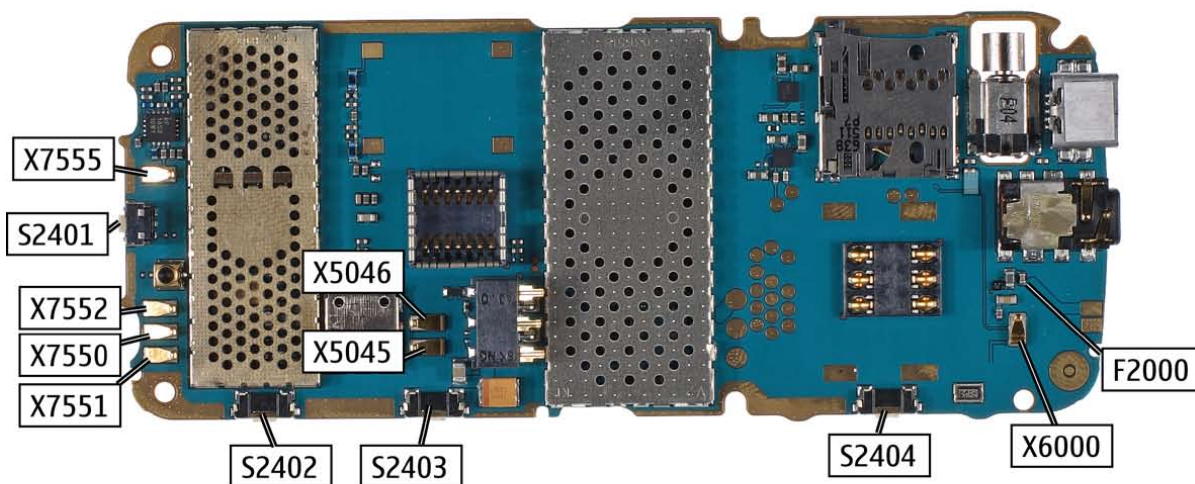
“Handling Waste in NOKIA Repair Service”

on your local delivery server e.g. NOL.

10.LEVEL 2 SOLDER COMPONENTS

6120c RM-243/RM-310 / 6121c RM-308/RM-309
Level 2 solder components

Solder components only for LEVEL 2



Ver. 1.0

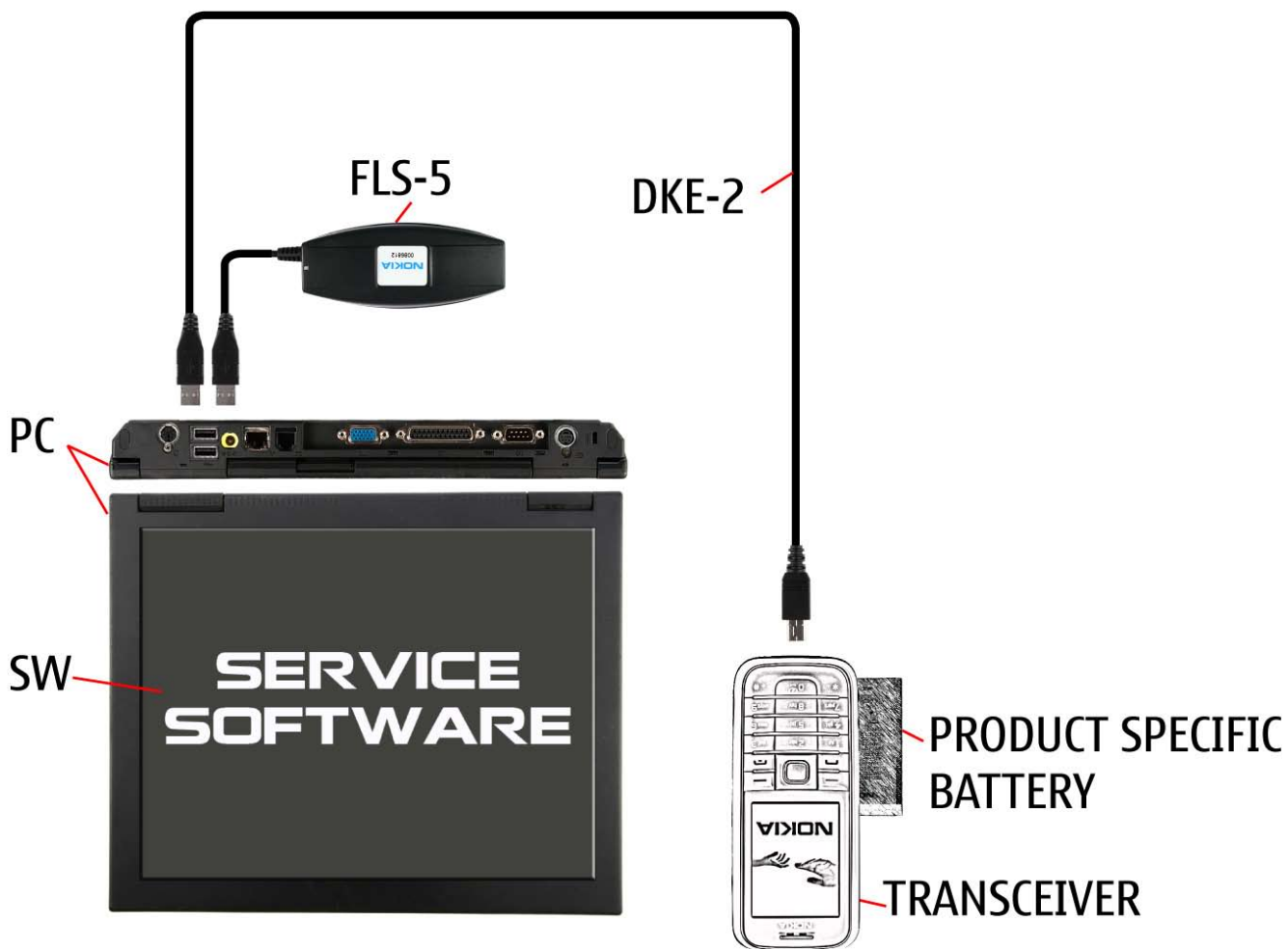
11.SERVICE DEVICES

 <p>FLS-5</p> <p>FLS-5 incl. ACF-8, Driver and User Guide Dongle and flash device incorporated into one package, developed specifically for POS use.</p>	 <p>ACF-8 Universal Power Supply is used to power FLS-4S.</p>	 <p>Travel Charger AC-4 Small and lightweight charger for fast charging of your phone battery.</p>
 <p>DKE-2 Service Cable to connect the PC with the mini USB connector.</p>	 <p>SS-102 Camera removal tool. One side is for disassembly, the other side for assembly.</p>	<p>RJ-176</p>  <p>RJ-176 Soldering Jig</p>
 <p>Internal Battery BL-5B Inserted under the back cover, this Li-Ion battery provides power in a lightweight package.</p>	 <p>Lead-free Solder Wire Mandatory for lead-free products (Level 2 only).</p>	 <p>0772040 NMP Standard Toolkit (V2) For more informations refer to the Service Bulletin (SB-011) on NOKIA Online. Supplier or manufacturer contacts for tool re-order can be found in "Recommended service equipment" document on NOKIA Online.</p>

12.SW-UPDATE

Flash Concept – (Point of Sales)

To use FLS-5 Flash Dongle you have to follow the user guide inside the sales package. Please check always for the latest version of flash software, which is available on [NOKIA Online](#).



13. DISASSEMBLY INSTRUCTION



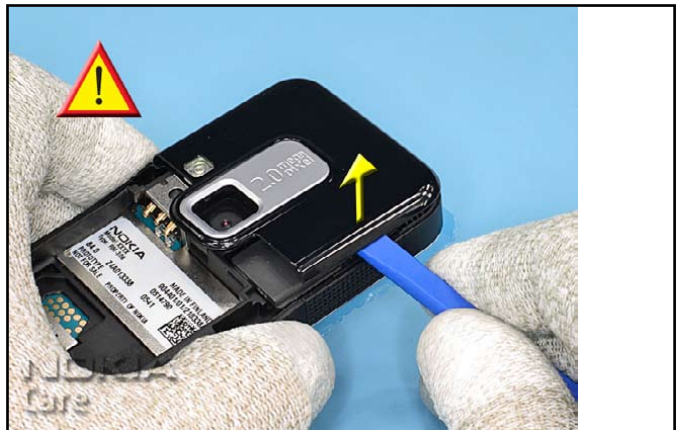
1. Nokia 6120 Classic, Disassembly.



2. You will need the Nokia Standard Toolkit version 2 as well as the connector opening tool SS-34 and the camera removal tool SS-102. Also refer the General Mechanical Guideline Video for additional hints about the tools and component handling.



3. COVER all sensitive surfaces with a protective film. Unlock and remove the BATTERY COVER. Remove the Battery if inserted.



4. Place the SS-93 between the C-COVER and the ANTENNA COVER ASSY, and release the clips beginning on the shown side.



5. Release the clip on the top of the unit.



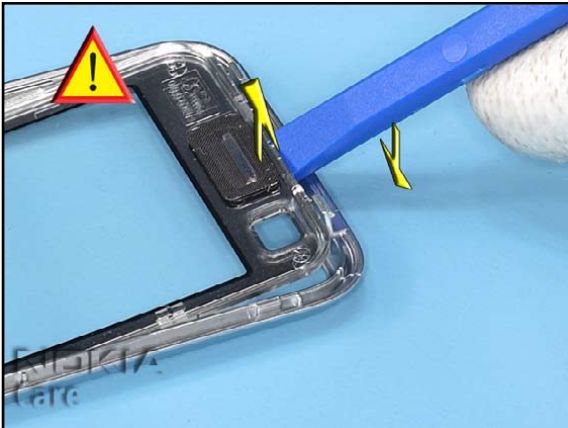
6. Release the last clip and remove the ANTENNA COVER ASSY.



7. The A-COVER is attached with clips to the C-COVER. Unlock the clips on the shown side first. Avoid damaging the clips.



8. Then unlock the clips on the other side and remove the A-COVER.



9. Unlock the WINDOW ASSY on the top of the COVER first.



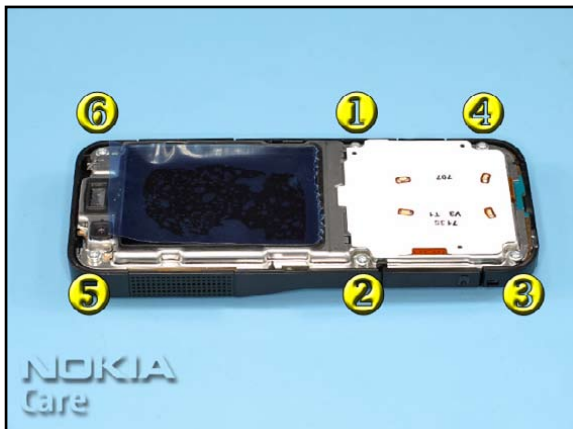
10. The WINDOW ASSY is additionally secured with two hooks to the A-COVER. Carefully expand the A-COVER a bit and then push out the WINDOW ASSY.



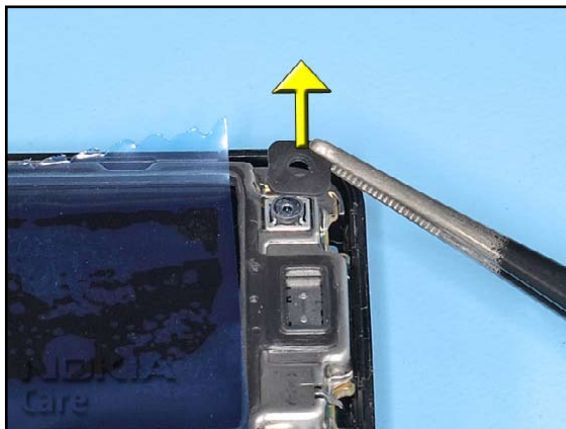
11. Pay attention to the guide pin of the WINDOW ASSY.



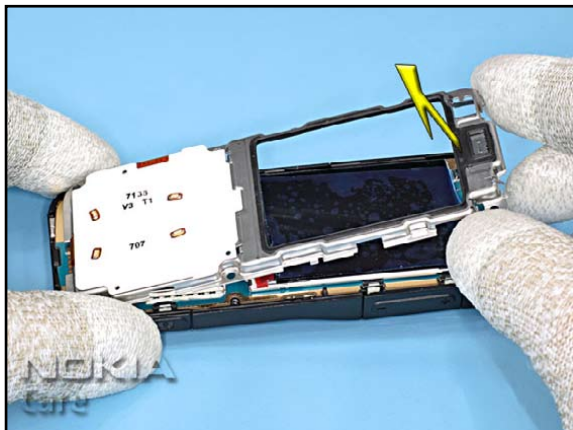
12. Remove the KEYMAT.



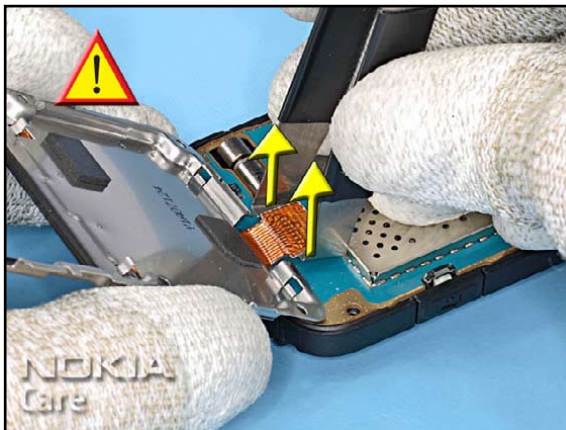
13. Undo the SCREWS in the order shown and remove them.



14. Remove the FRONT CAMERA GASKET.



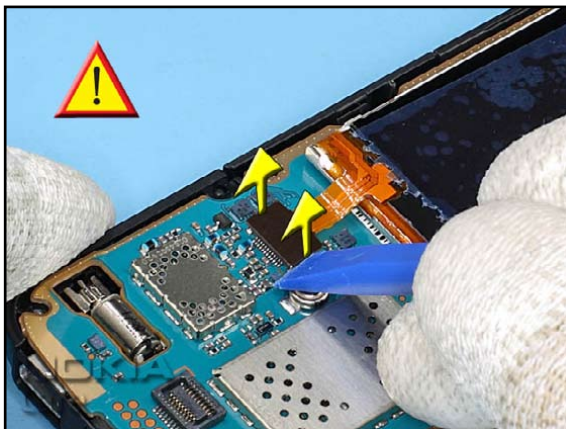
15. Gently lift the DISPLAY FRAME, paying attention to the UI FLEX.



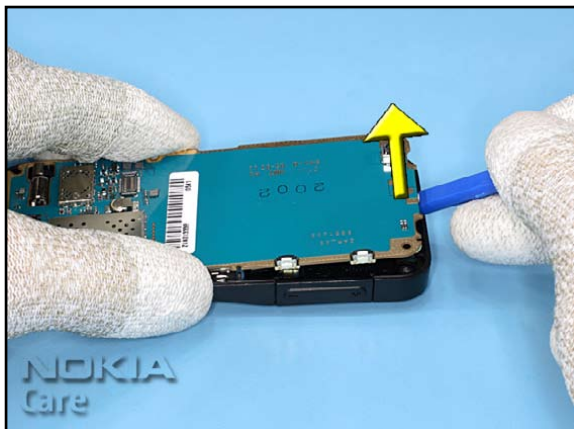
16. Carefully open the UI FLEX connector with the SS-34 and remove the DISPLAY FRAME.



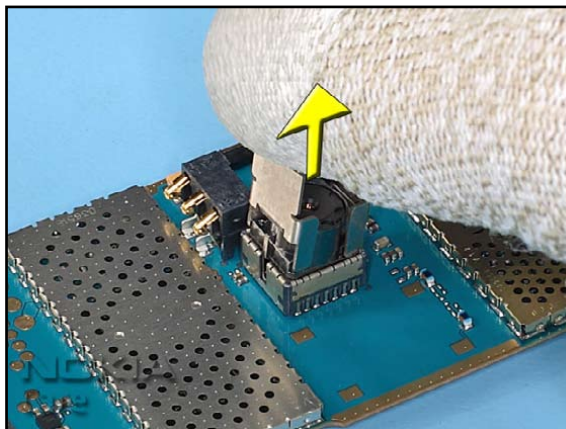
17. Lift the EARPIECE with the SS-93 and remove it.



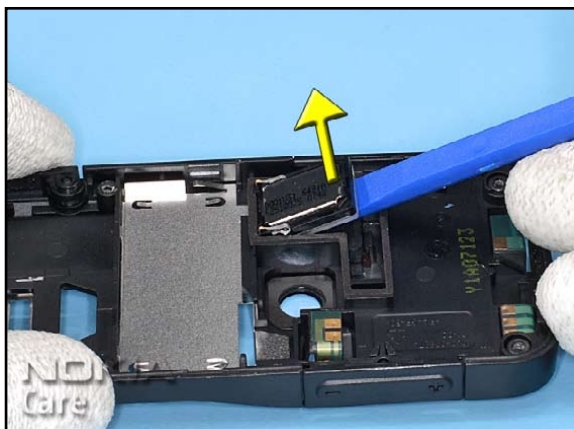
18. First open the LCD connector, paying attention to the surrounding components and then remove the LCD.



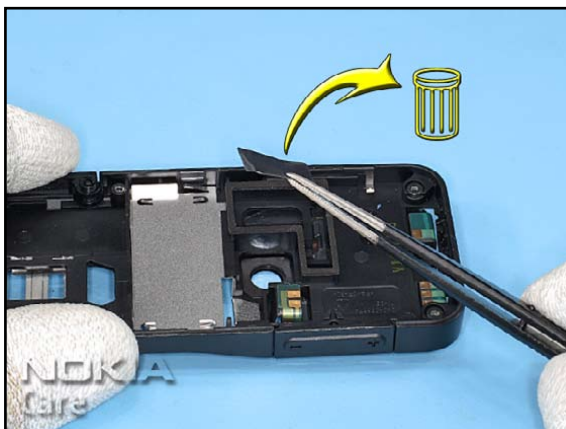
19. Lift the PWB a bit with the SS-93 and remove it from the C-COVER.



20. Unlock and remove the MAIN CAMERA.



21. Remove the IHF SPEAKER.



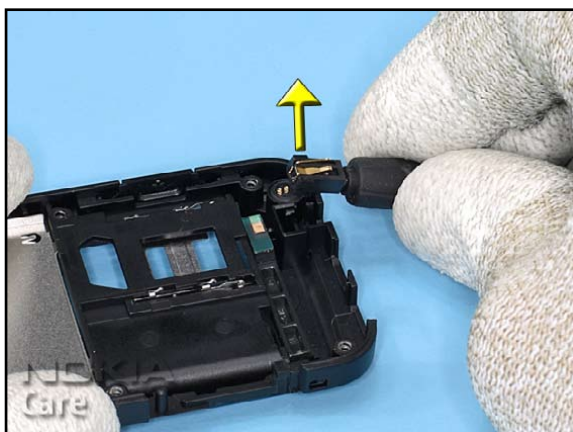
22. Remove the AUDIO GASKET and discard it. Ensure that no adhesive remains.



23. Open the MEMORY CARD DOOR and remove it.



24. Remove the CONNECTOR LABEL and discard it.



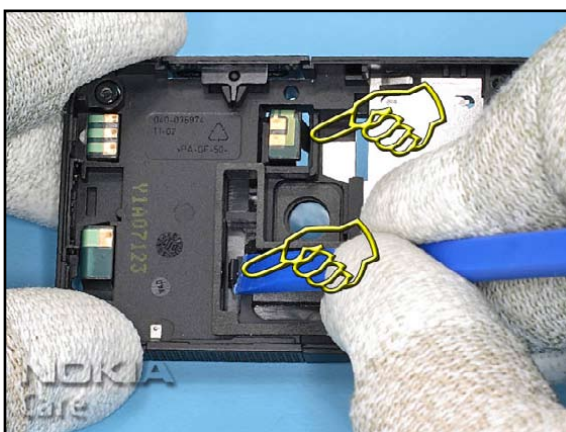
25. Remove the DC-JACK.



26. Remove the MICROPHONE.



27. Lift the BT ASSY with the SS-93 as shown and discard it.



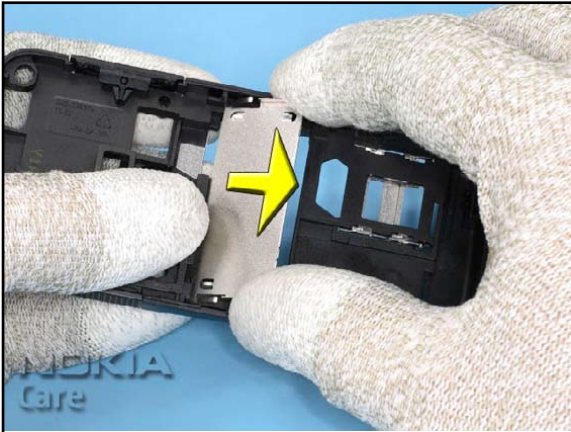
28. Release the both clips of the ANTENNA ASSY with the opening tool.



29. Now, the ANTENNA ASSY can be removed easily.



30. Unlock the two hooks of the C-COVER METAL PLATE.



31. Remove the C-COVER METAL PLATE from the C-COVER. The disassembly procedure is now complete.

14. ASSEMBLY INSTRUCTION



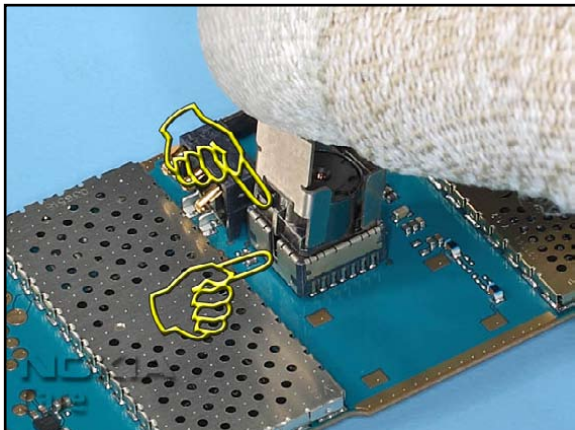
1. Nokia 6120 Classic, Assembly Hints.



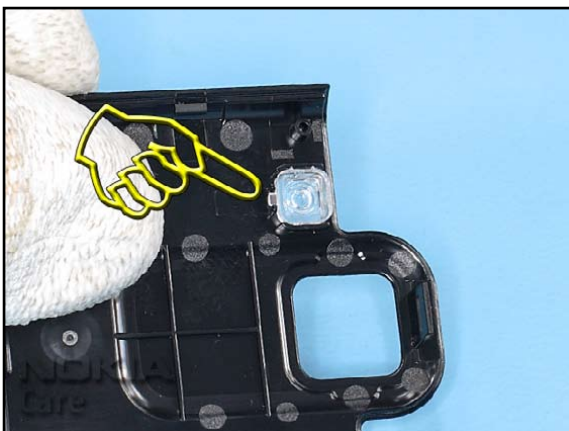
2. Place the C-COVER METAL PLATE onto the C-COVER as shown.



3. Secure the C-COVER METAL PLATE by pressing it into position.



4. Ensure the correct position of the MAIN CAMERA.



5. Check the correct position of the FLASH LIGHT WINDOW before assembling the unit.













6. Tighten the six screws to the torque of 23Ncm in the order shown.

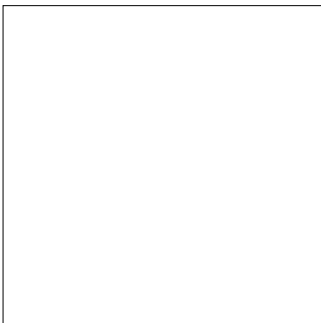
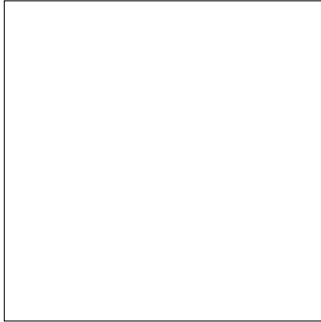
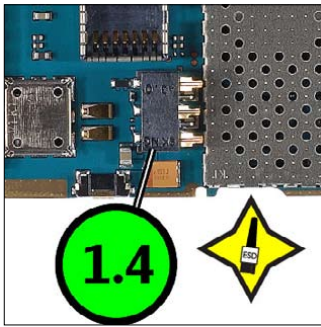
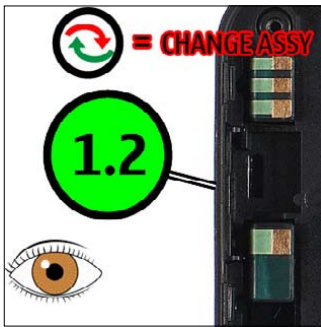


7. Always use a new CONNECTOR LABEL when assembling the unit.

15.LEGEND FOR QUICK TROUBLE SHOOTER

Legend for Quick Troubleshooter	
This legend is valid for all parts of the Quick Troubleshooter	
Follow the steps until the problem is solved. If this doesn't help, you are not authorized to go forward.	
	Check the mechanical condition of the component (bent, broken or missing).
	Only marked components can be replaced. If additionally " =CHANGE ASSY " appears, then change the whole assembly (e.g. A4=D-COVER ASSEMBLY).
	Cloth usage: Check pads or contacts for optical and mechanical condition particularly regarding to corrosion. Clean it if necessary. 
	Measure component for electrical functionality and change, if needed. (Level 2 only) 
	ESD Brush usage: Check contacts for optical and mechanical condition particularly regarding to corrosion. Clean it if necessary. 
	<p>Explanation</p> <div style="border: 1px solid red; padding: 5px;">  <p>1.1 Syptom (3)</p> <p>Zoom position (Note! First zoom starts with 1.2)</p> <p>Fault name</p> <p>Count of fault positions</p> </div>

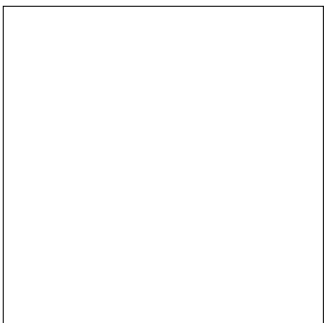
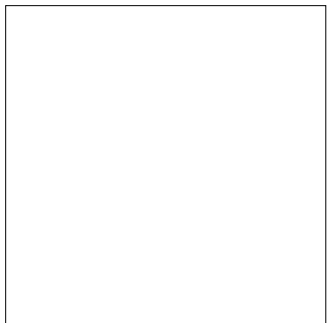
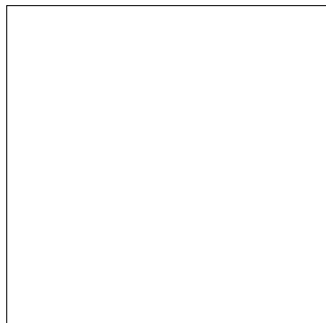
16. QUICK TROUBLE SHOOTER - POWER ON



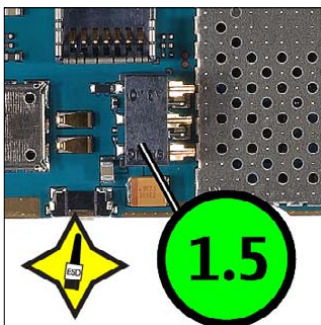
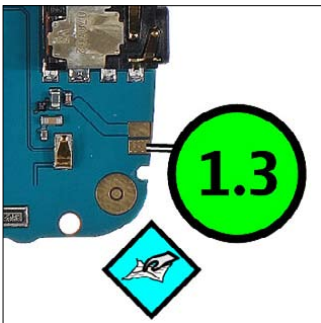
Explanation

1.1	Symtom (3)	
Zoom position (Note! First zoom starts with 1.2)	Fault name	Count of fault positions

1.1 POWER ON (3)



17. QUICK TROUBLE SHOOTER - CHARGING



Explanation

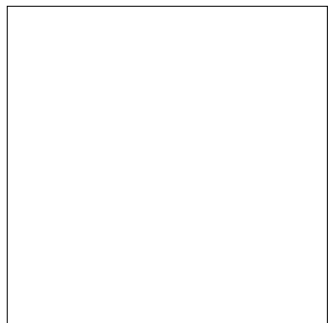
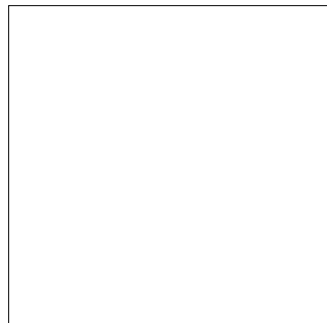
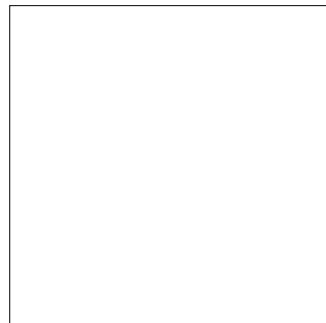
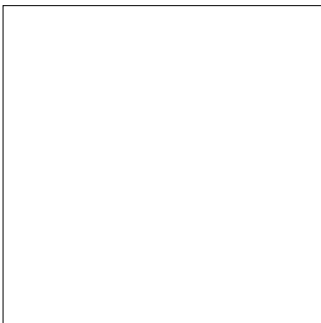
1.1 Symtom (3)

Zoom position (Note! First zoom starts with 1.2)

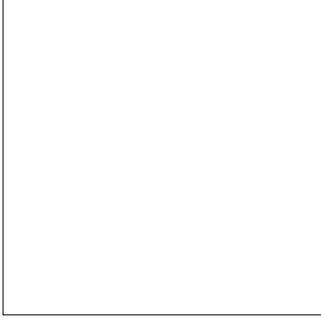
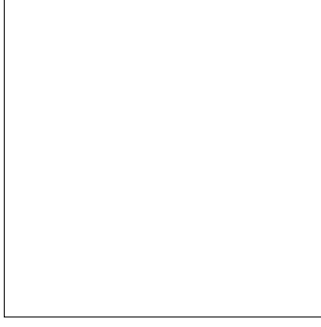
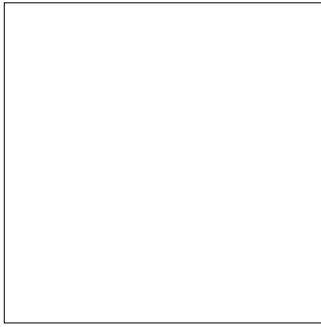
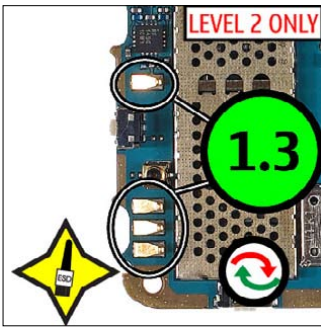
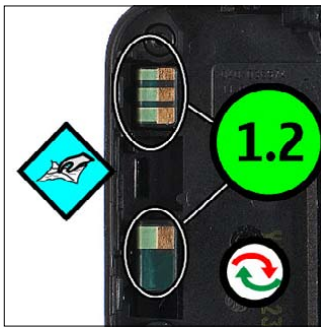
Fault name

Count of fault positions

1.1 CHARGING (4)



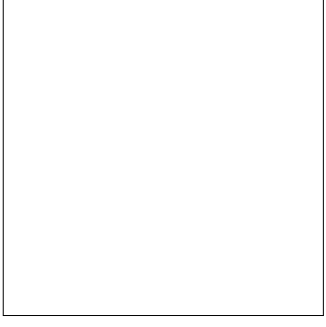
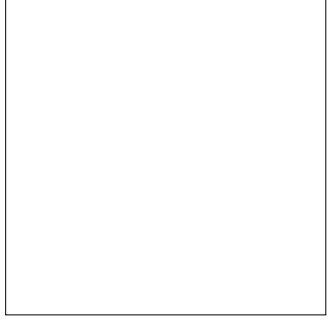
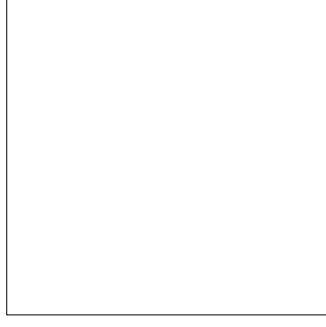
18. QUICK TROUBLE SHOOTER - NO SERVICE



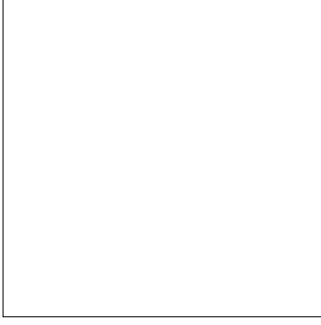
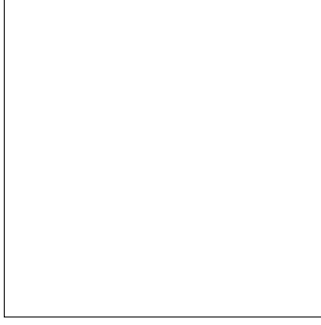
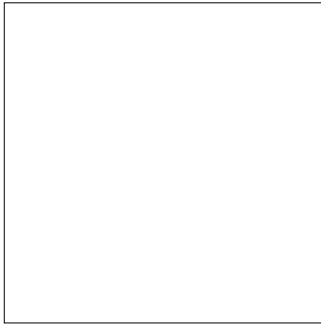
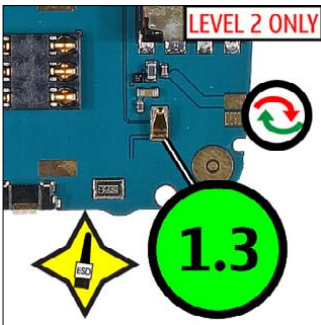
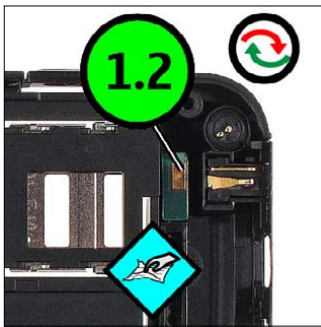
Explanation

1.1	Symtom (3)	Fault name	Count of fault positions
Zoom position (Note! First zoom starts with 1.2)			

1.1 **NO SERVICE (2)**



19. QUICK TROUBLE SHOOTER - BLUETOOTH



Explanation

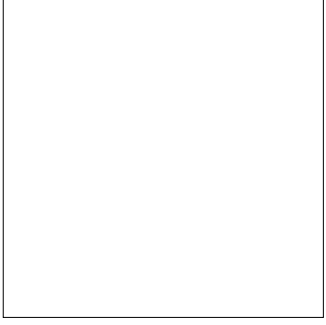
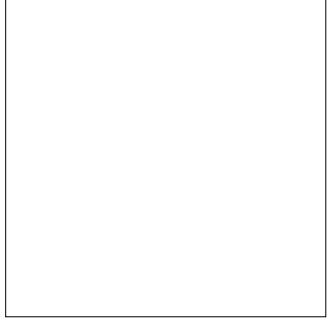
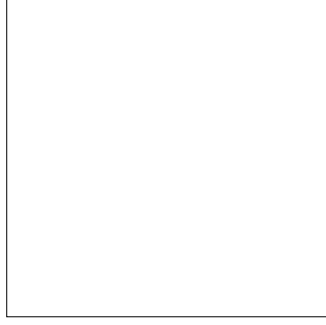
1.1 **Symtom (3)**

Zoom position (Note! First zoom starts with **1.2**)

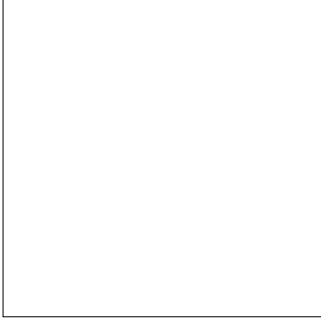
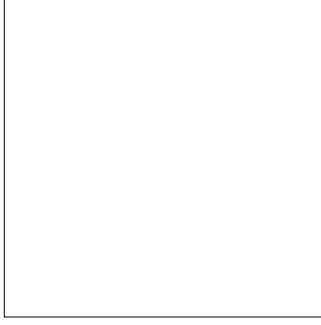
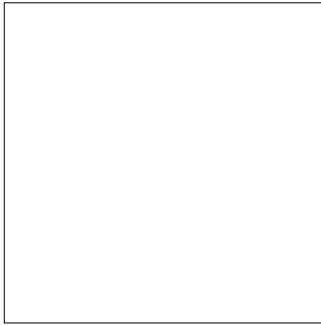
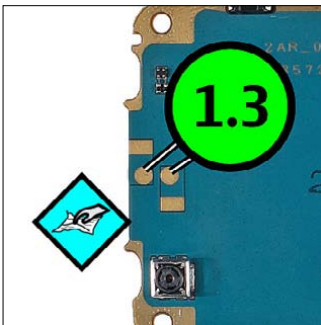
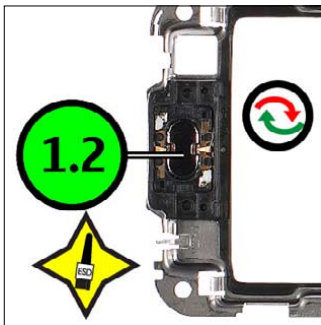
Fault name

Count of fault positions

1.1 **BLUETOOTH (2)**



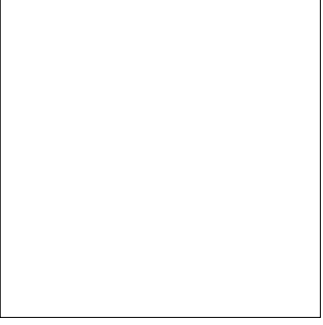
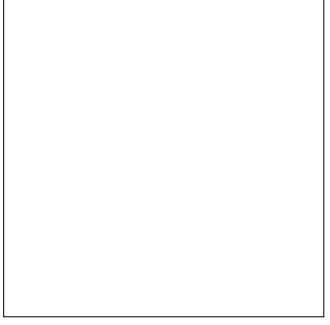
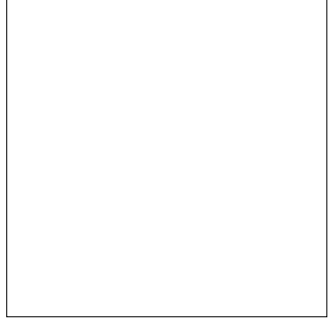
20. QUICK TROUBLE SHOOTER - EARPIECE



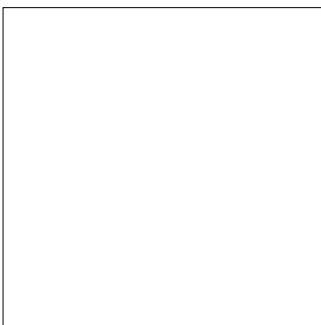
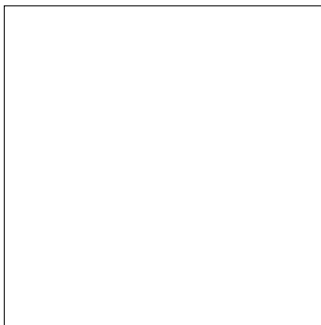
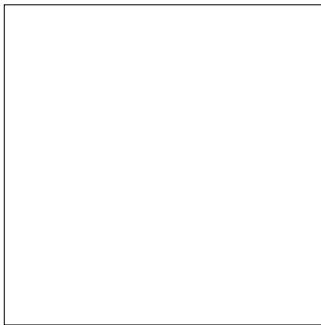
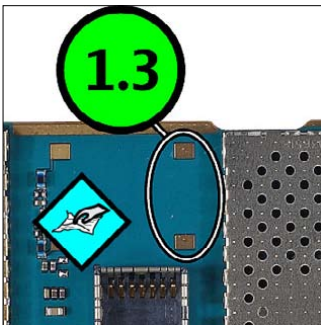
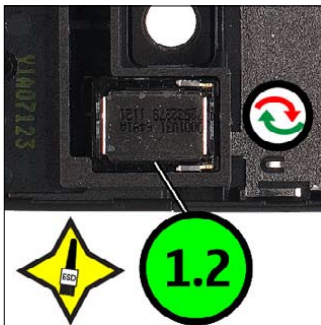
Explanation

1.1	Symtom (3)	
Zoom position (Note! First zoom starts with 1.2)	Fault name	Count of fault positions

1.1 **EARPIECE (2)**



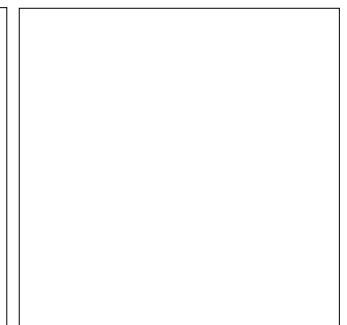
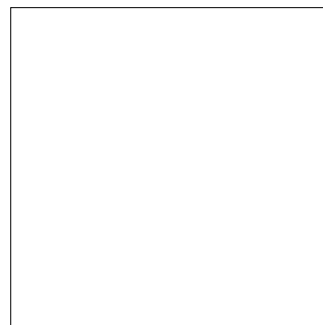
21. QUICK TROUBLE SHOOTER - IHF SPEAKER



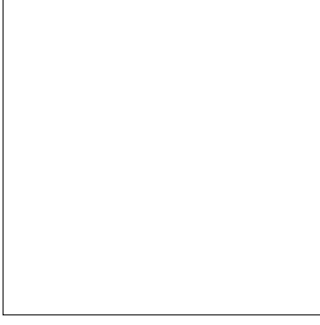
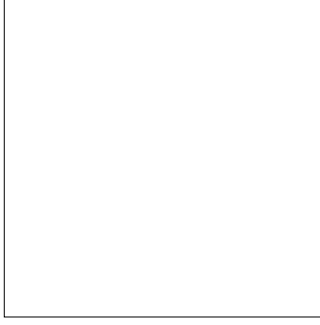
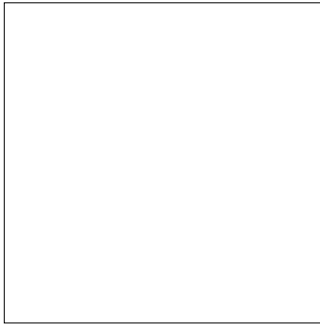
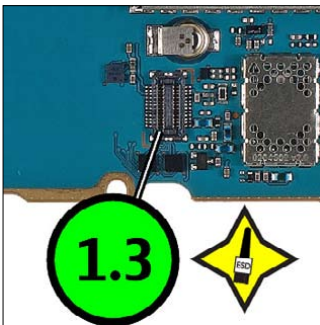
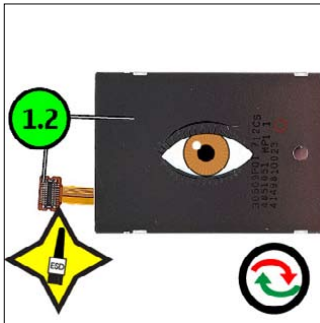
Explanation

1.1	Symtom (3)	Fault name	Count of fault positions
Zoom position (Note! First zoom starts with 1.2)			

1.1 IHF SPEAKER (2)



22. QUICK TROUBLE SHOOTER - DISPLAY

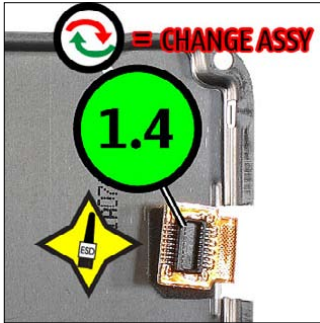


Explanation

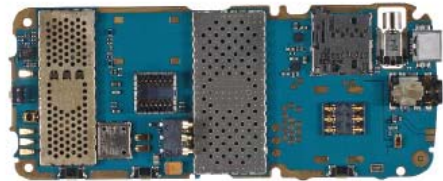
1.1	Symtom (3)	Fault name	Count of fault positions
Zoom position (Note! First zoom starts with 1.2)			

1.1 DISPLAY (2)

23. QUICK TROUBLE SHOOTER - KEYMAT

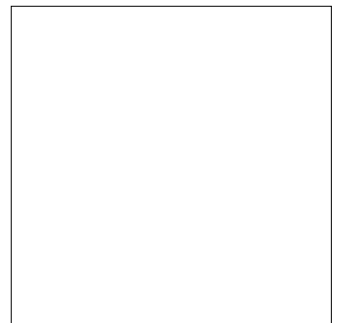
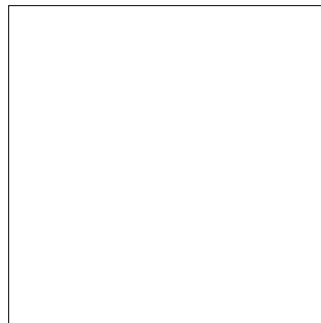
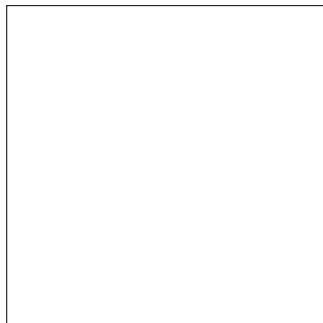
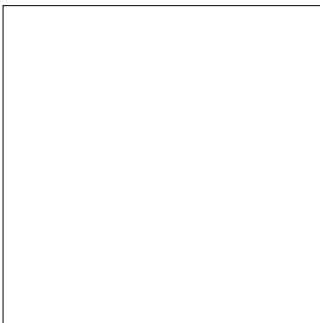


1.1 KEYMAT (4)

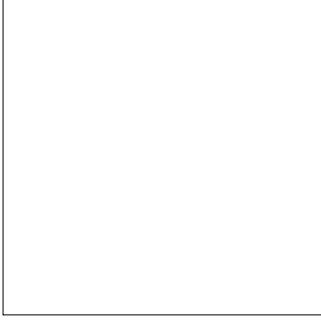
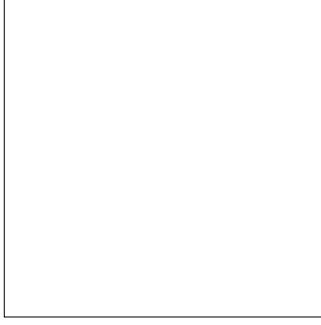
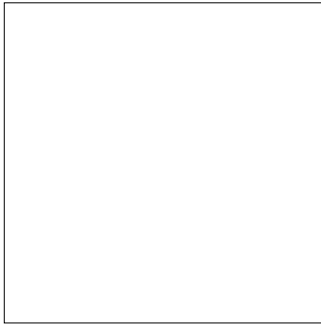
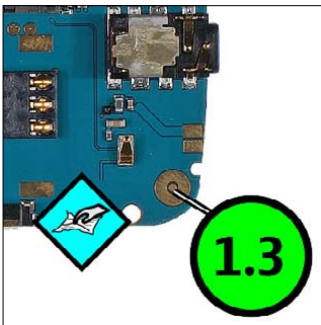
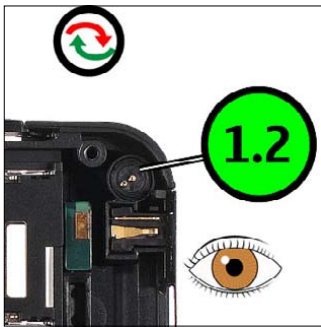


Explanation

1.1	Symtom (3)
Zoom position (Note! First zoom starts with 1.2)	Fault name Count of fault positions



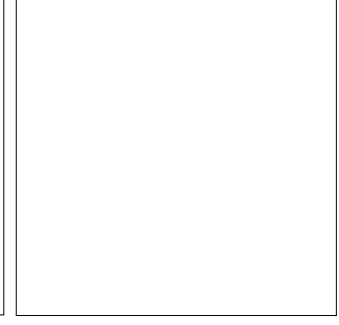
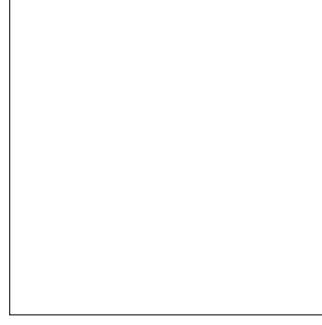
24. QUICK TROUBLE SHOOTER - MICROPHONE



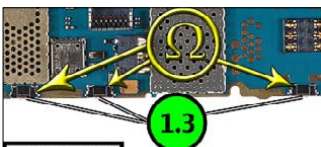
Explanation

1.1	Symtom (3)	Fault name	Count of fault positions
Zoom position (Note! First zoom starts with 1.2)			

1.1 MICROPHONE (2)



25. QUICK TROUBLE SHOOTER - VOLUME/CAMERA KEYS



How to measure 2-pol switch (built-in)

open $\approx \infty \Omega$

pressed $\approx 0 \Omega$

LEVEL 2 ONLY

MEASURE OPEN AND PRESSED STATE

Explanation

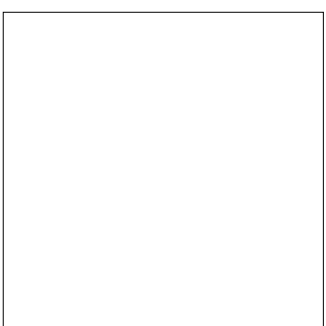
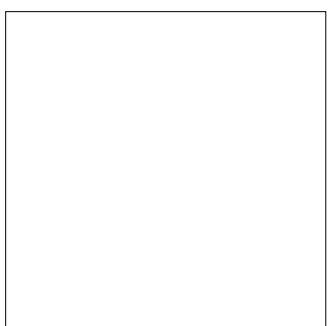
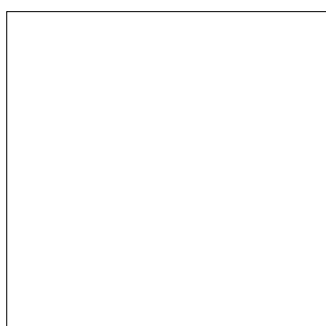
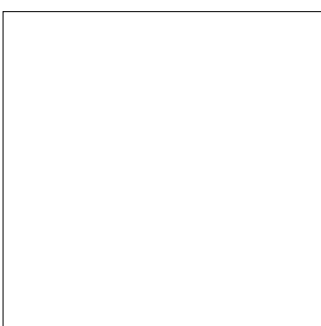
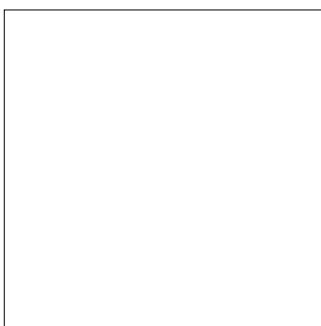
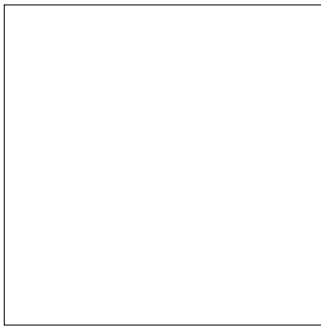
1.1 Symtom (3)

Zoom position (Note! First zoom starts with 1.2)

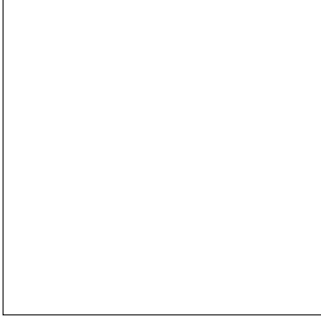
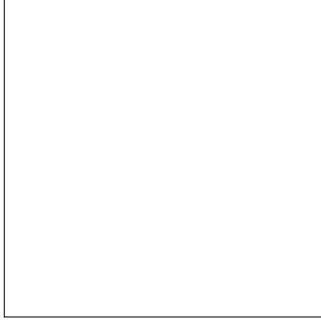
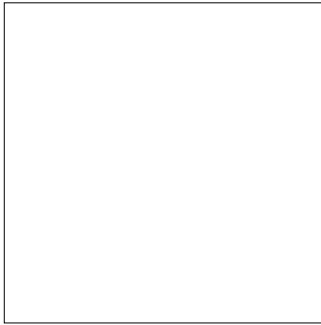
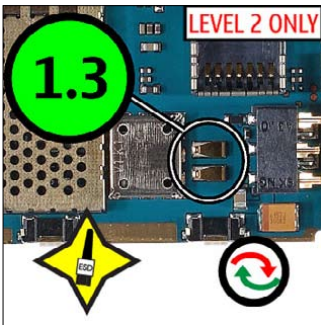
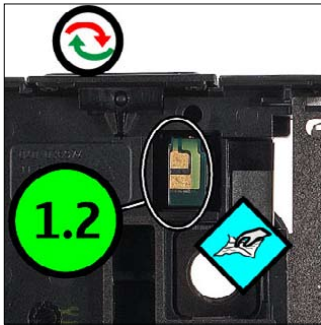
Fault name

Count of fault positions

1.1 VOLUME/CAMERA KEYS (2)



26. QUICK TROUBLE SHOOTER - FLASH LIGHT



Explanation

1.1 Symtom (3)

Zoom position (Note! First zoom starts with **1.2**)

Fault name

Count of fault positions

1.1 Flash Light (2)

